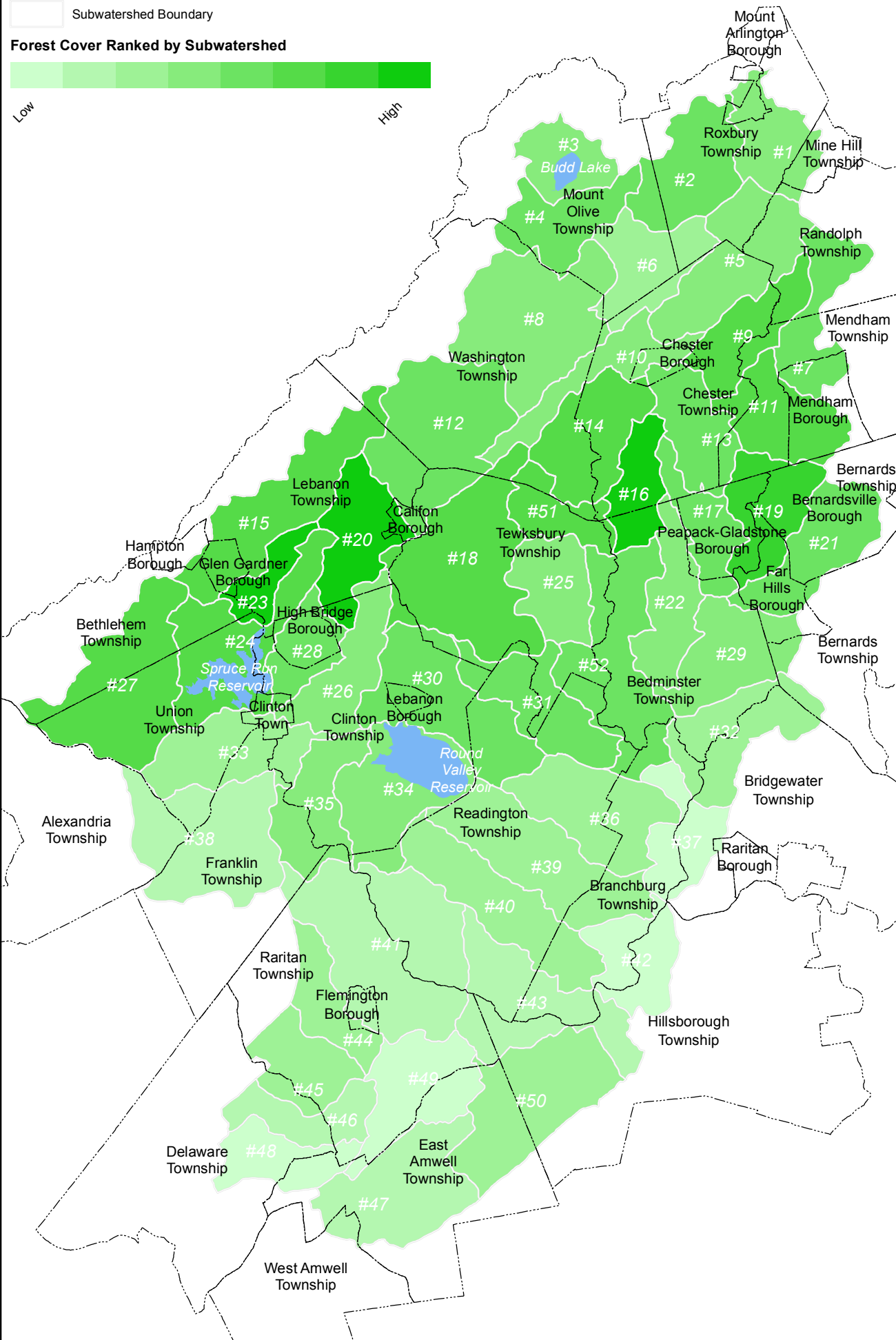


Ranked Forest Cover

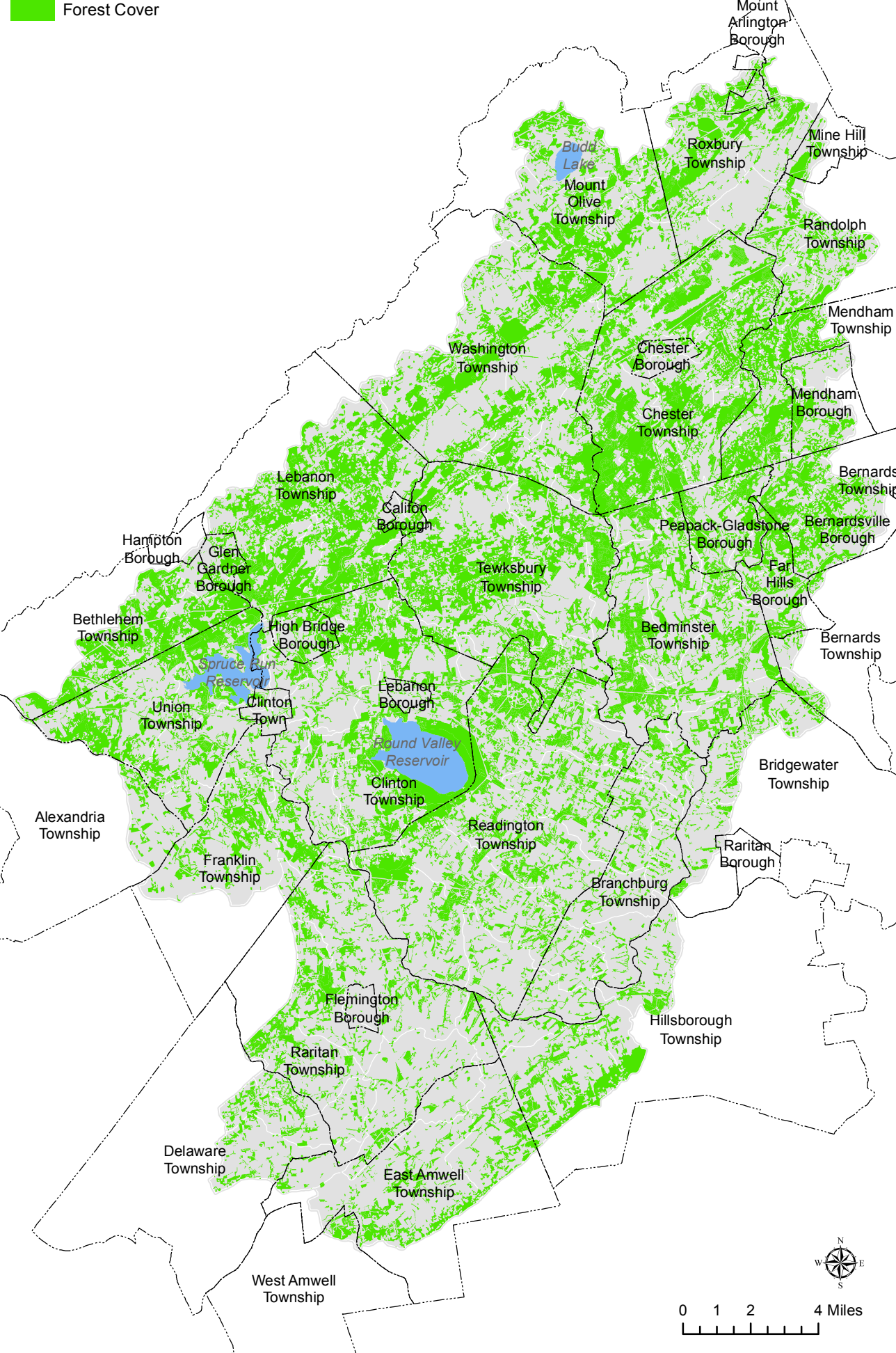
Subwatershed Boundary

Forest Cover Ranked by Subwatershed



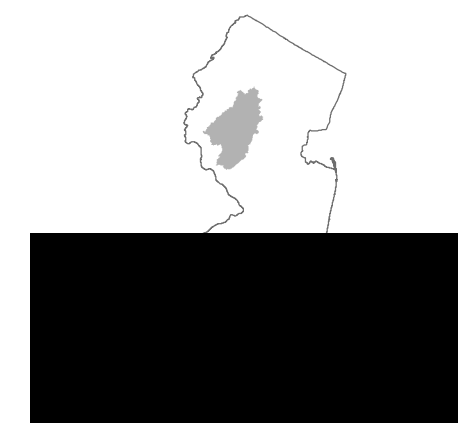
2012 Forest Distribution

Forest Cover



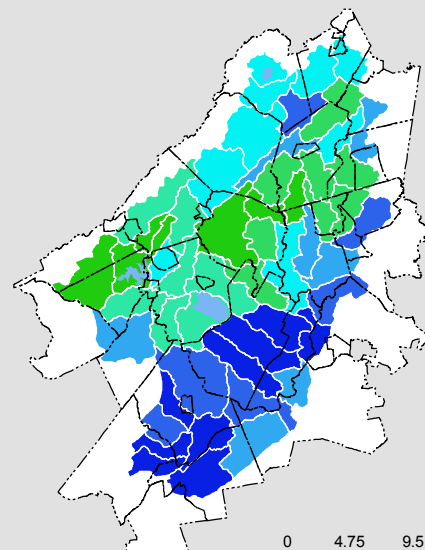
Ranking Based on Upland Forest Cover

- Municipal Boundary
- Water Body
- Subwatershed Boundary



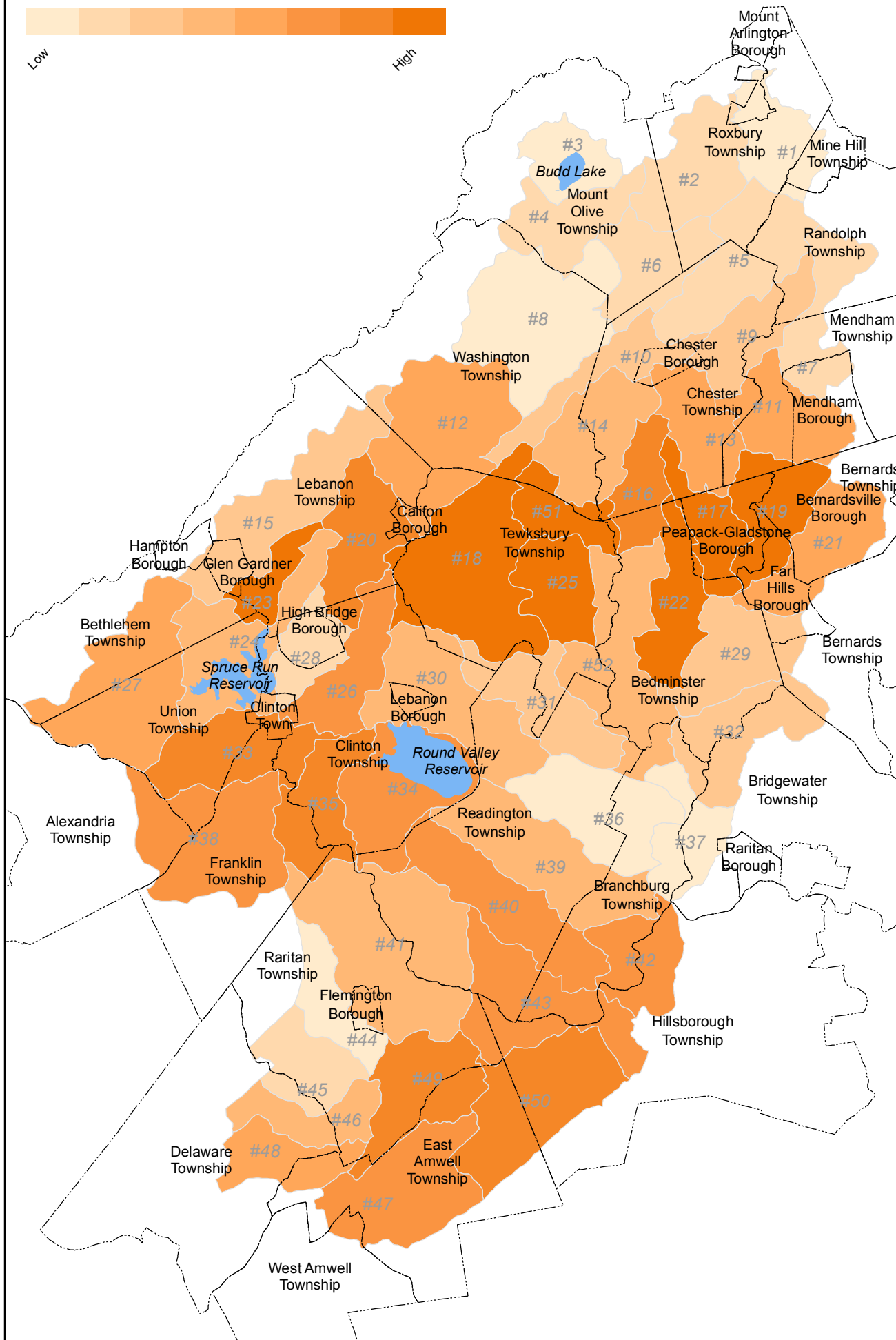
Forest Cover - NJDEP, 2012 LULC
Raritan Headwaters Ranking, 2016
map created: 9/14/2016
updated: 11/1/2016

Subwatershed Water Resource Protection Targets

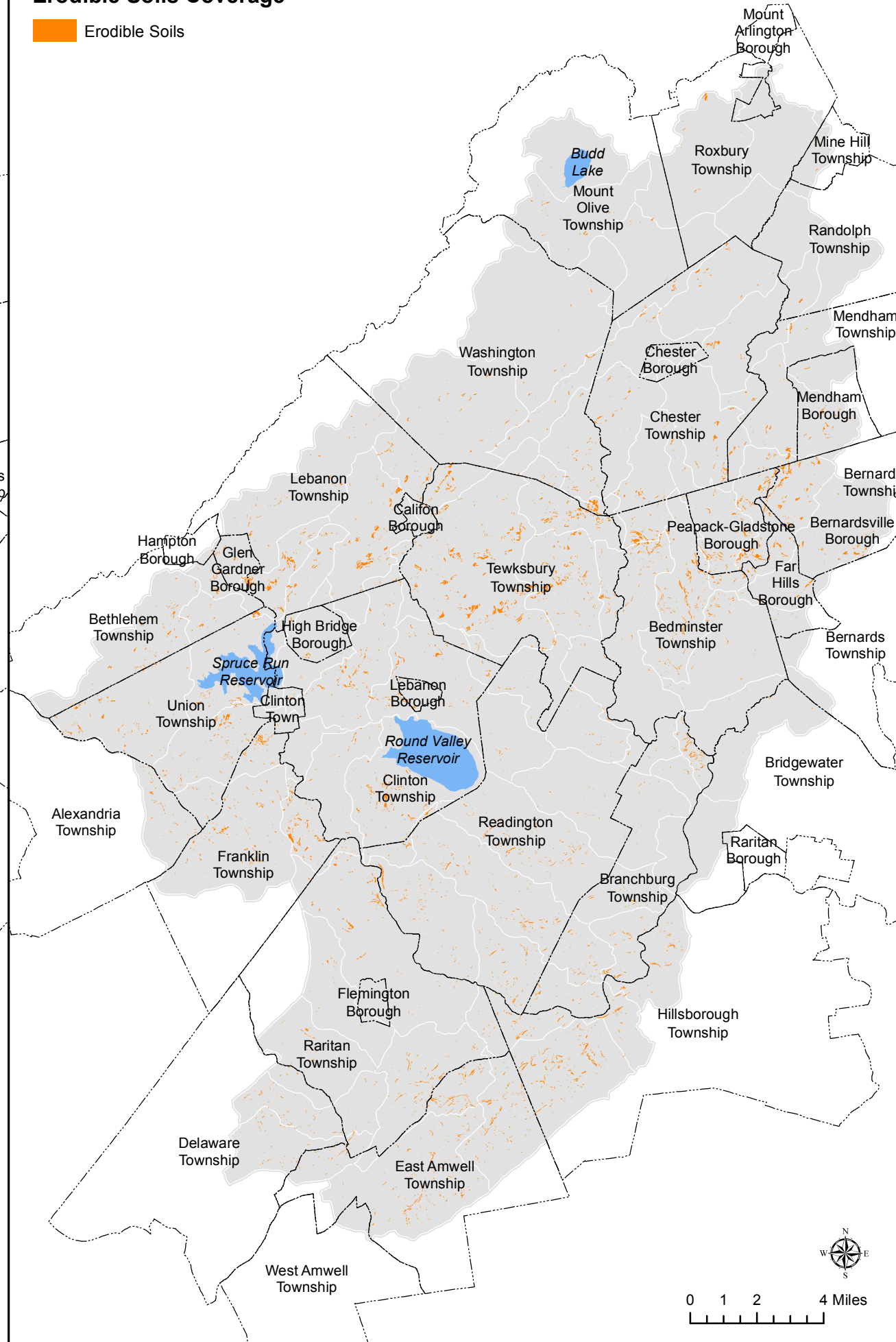
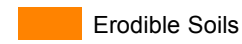


Subwatershed Ranking
Restoration ← → Preservation

Subwatershed Rankings for Erodible Soils

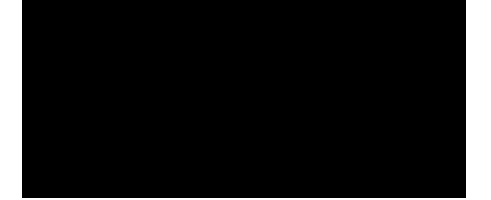
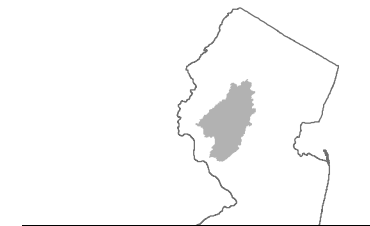


Erodible Soils Coverage



Maps of Erodible Soils Ranking and Coverage

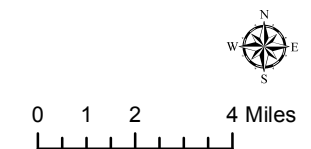
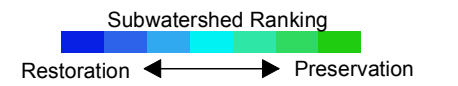
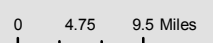
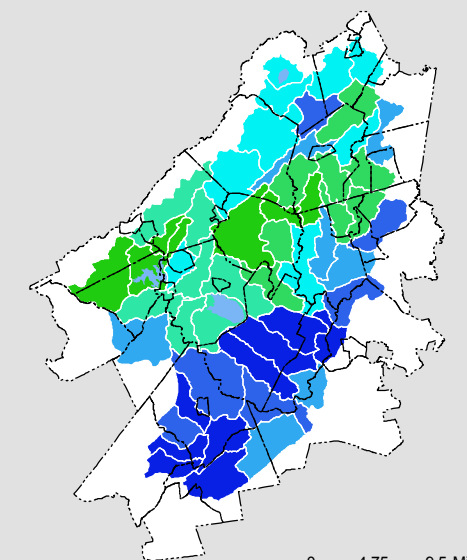
- Municipal Boundary
- Water Body
- Subwatershed Boundary



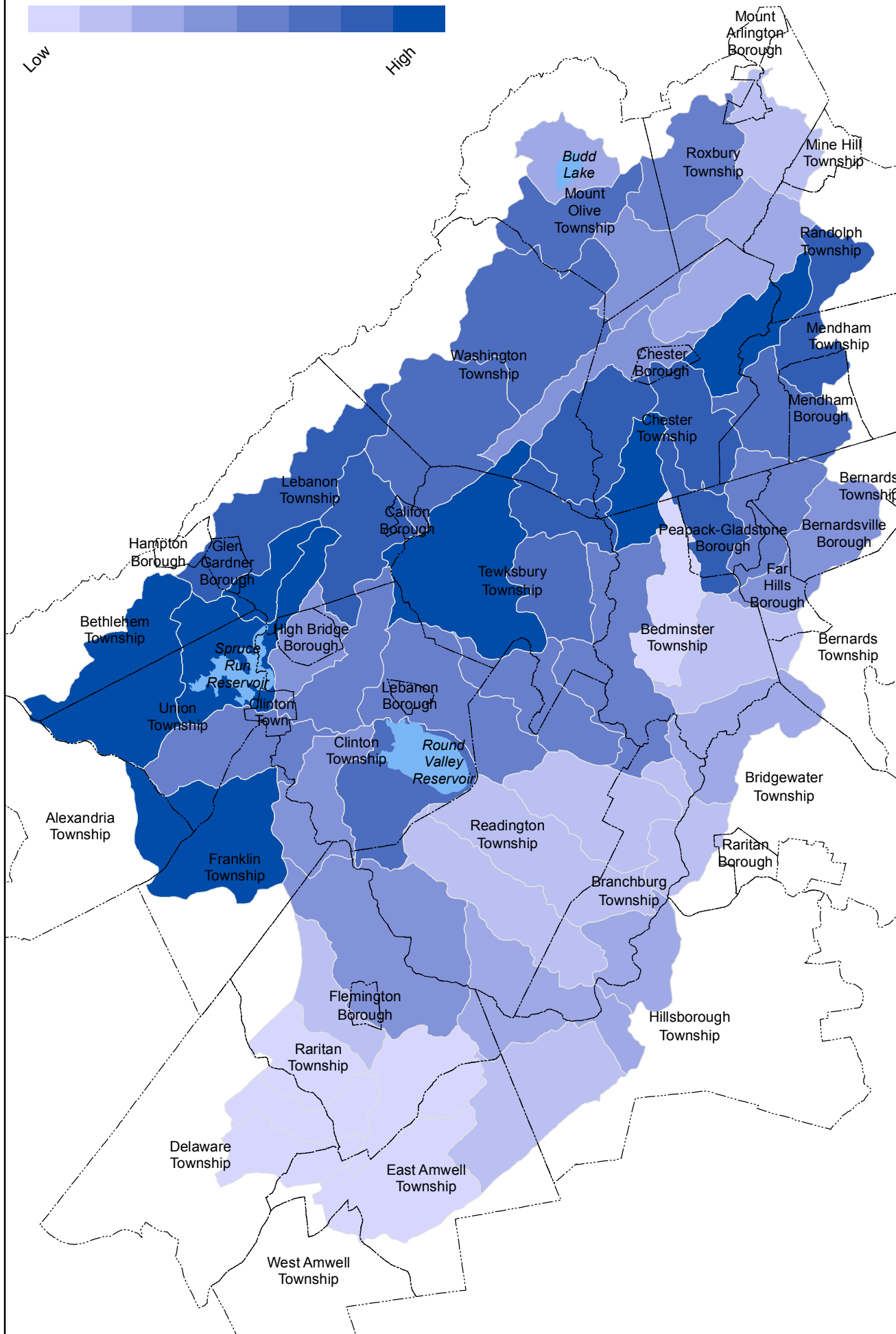
Highly Erodible Soils - NJWSA (2009) | model combines slope, soil series and K-Factor
Raritan Headwaters Ranking (2016)

map created: 8/5/2016
updated: 10/31/2016

Subwatershed Water Resource Protection Targets

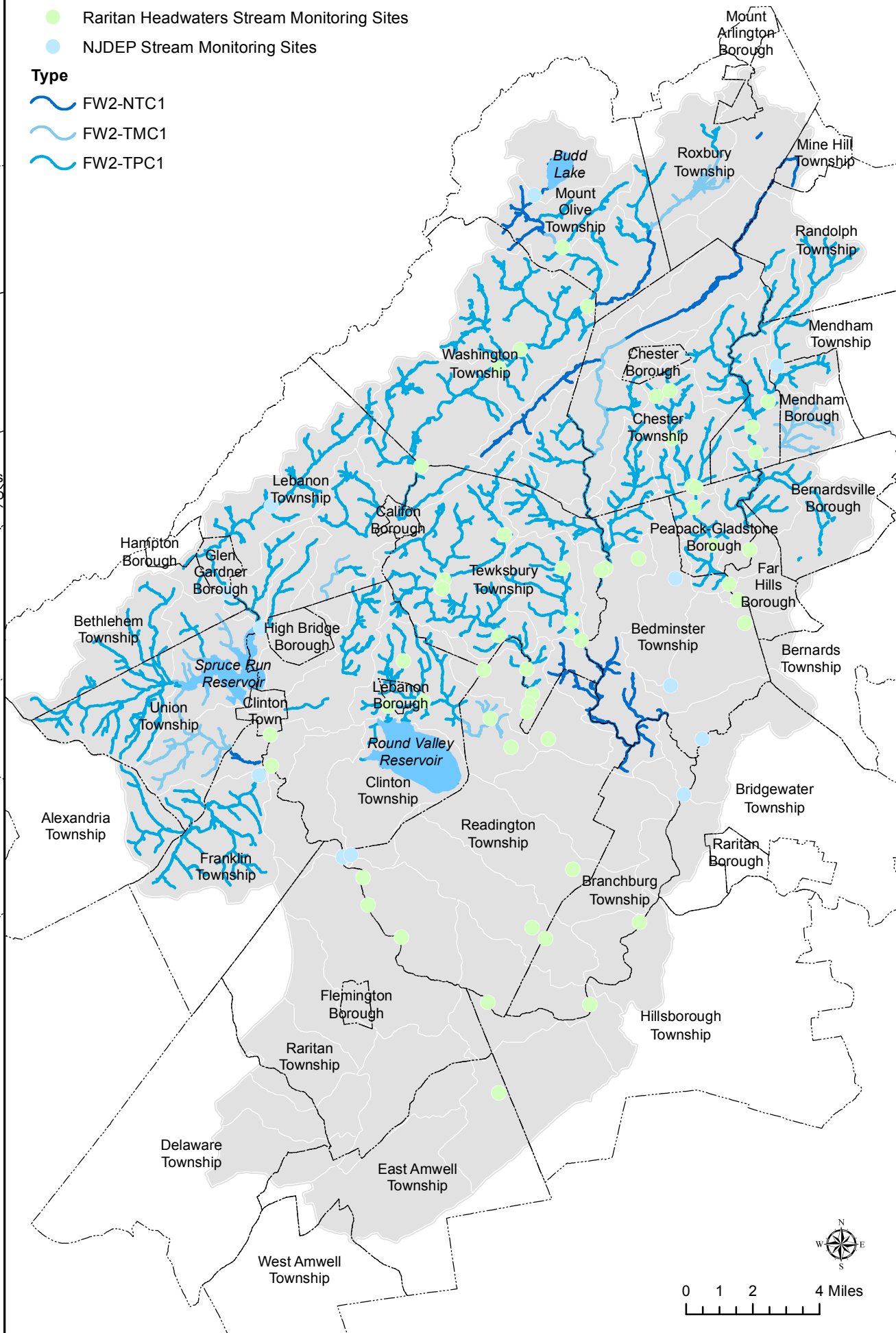


Subwatershed Ranking for Water Quality



Water Quality Coverages

- Raritan Headwaters Stream Monitoring Sites
 - NJDEP Stream Monitoring Sites
- Type
- FW2-NTC1
 - FW2-TMC1
 - FW2-TPC1



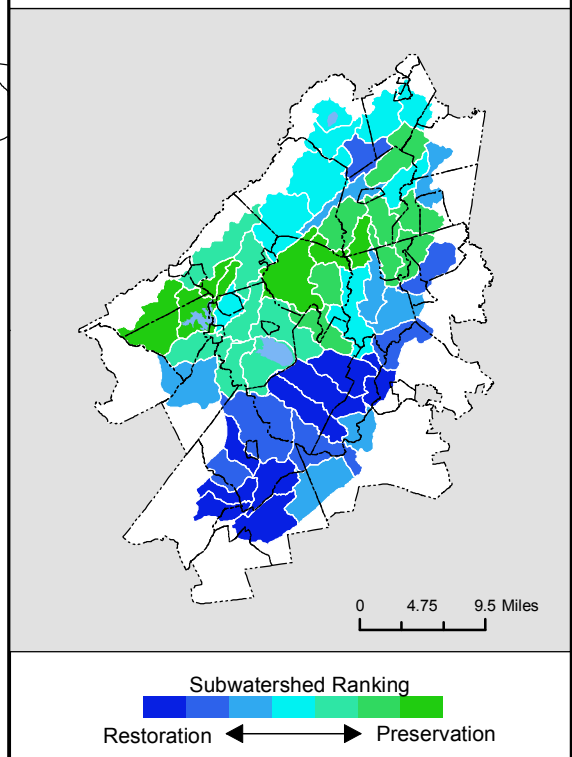
Maps of Water Quality Ranking and Coverages

- Municipal Boundary
- Water Body
- Subwatershed Boundary

map created: 8/5/2016
updated: 11/1/2016

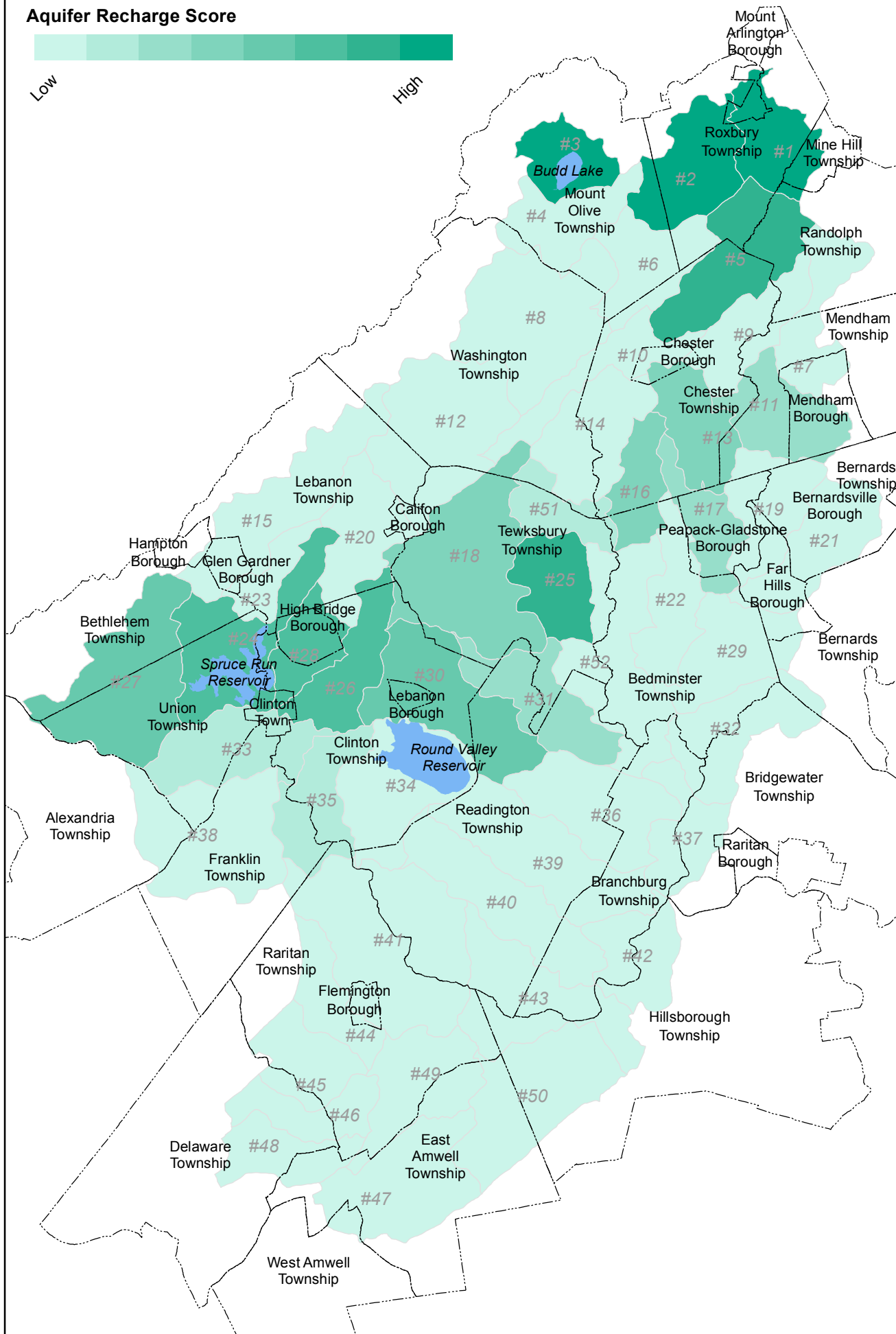
Sources:
Category 1 Streams - NJDEP, SWQS (2011)
RHA Stream Monitoring Sites - RHA (2015)
NJDEP Stream Monitoring Sites - NJDEP (2014) | NJDEP data was used where RHA did not have a site located in subwatershed
Raritan Headwaters Ranking (2016)

Subwatershed Water Resource Protection Targets

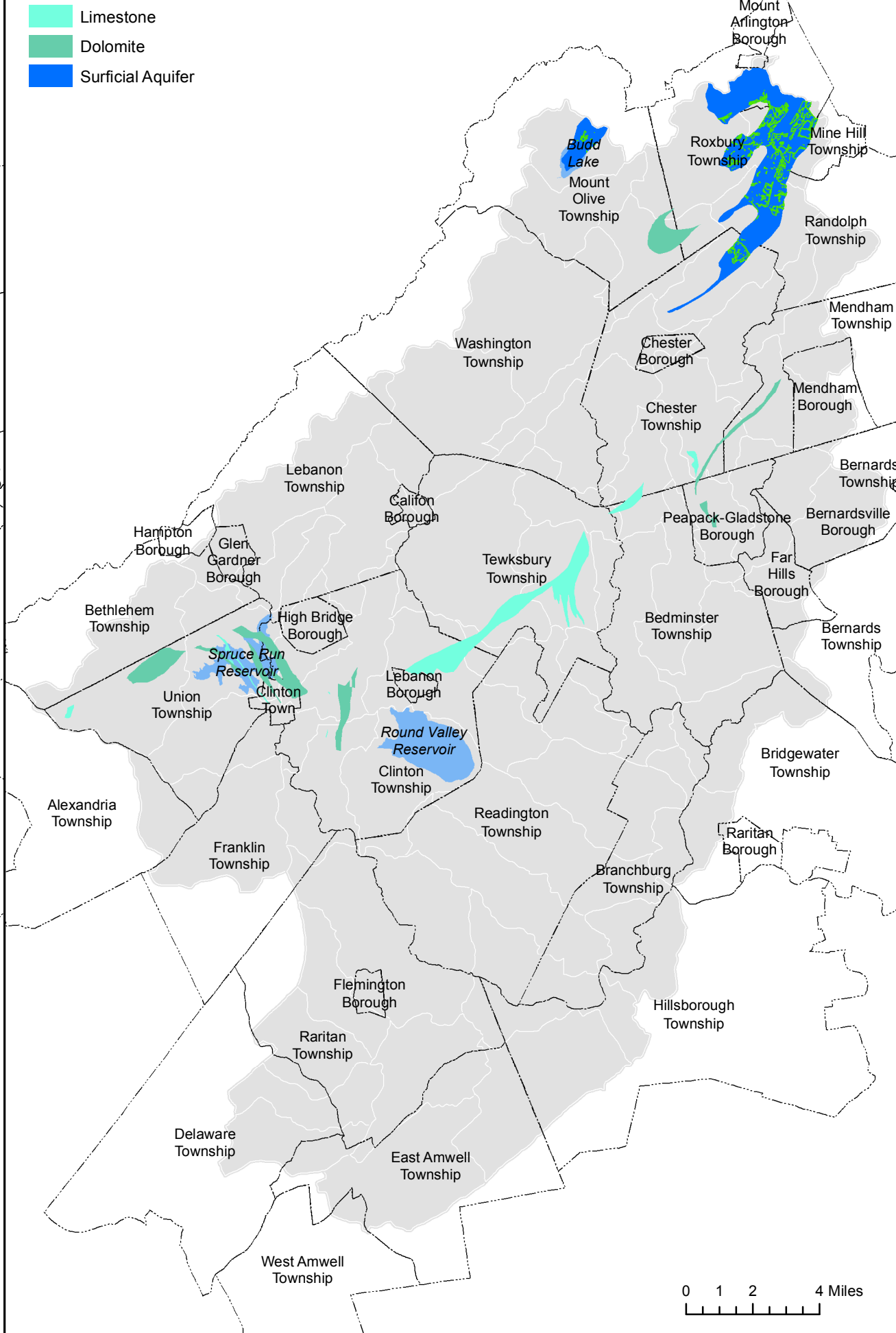


Subwatershed Ranking for Aquifer Recharge

Aquifer Recharge Score

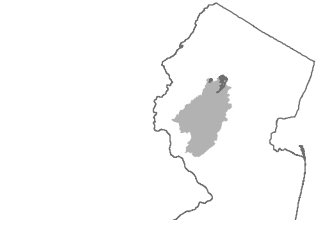


- NSWSA Priority Aquifer Recharge Area
- Limestone
- Dolomite
- Surficial Aquifer



Maps of Aquifer Recharge Rankings and Coverage

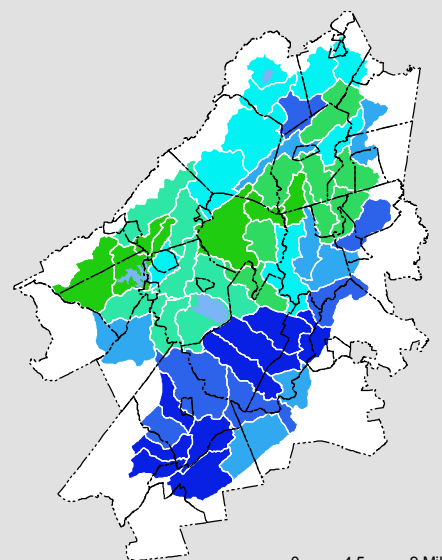
- Municipal Boundary
- Water Body
- Subwatershed Boundary



Source:
 NJWSA Priority Aquifer Recharge Area (2009)
 Limestone & Dolomite - NJGS (2007) | geology layer
 Surficial Aquifer - NJGS (1993) | saqfr2500
 Raritan Headwaters Ranking (2016)

map created: 8/5/2016
 updated: 10/31/2016

Subwatershed Water Resource Protection Targets



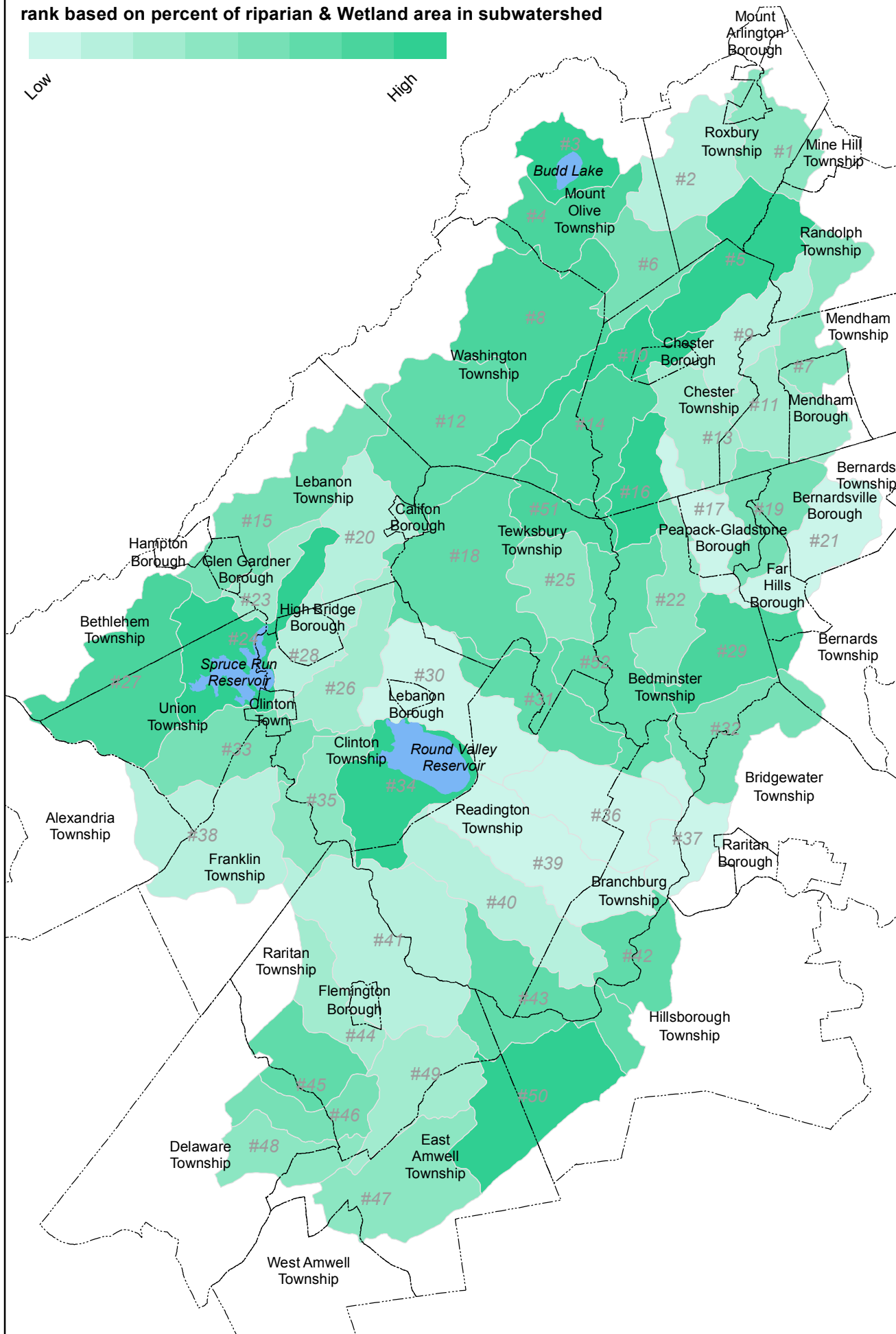
0 4.5 9 Miles

0 1 2 4 Miles

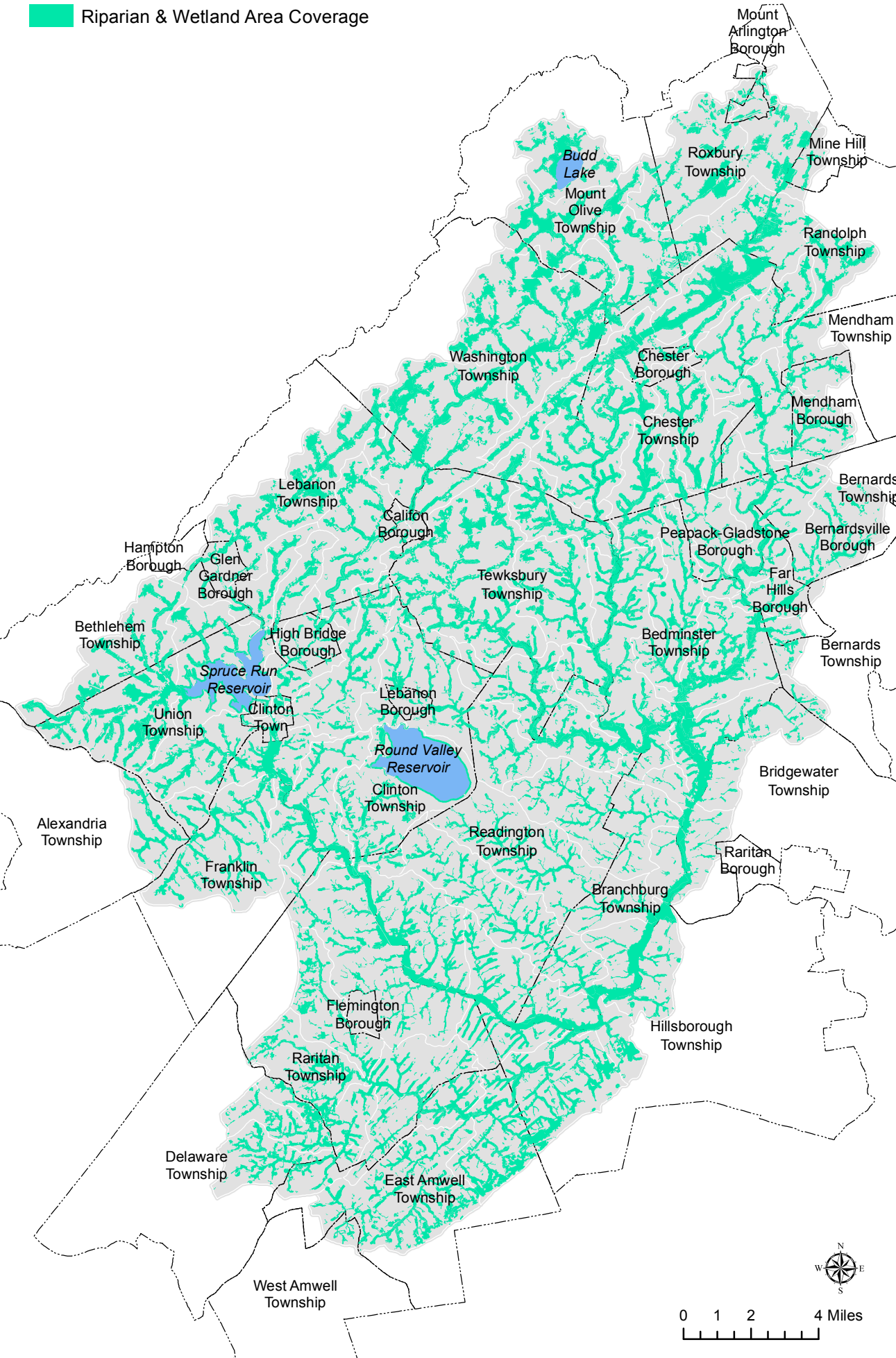


Subwatershed Rankings for Riparian Area

rank based on percent of riparian & Wetland area in subwatershed

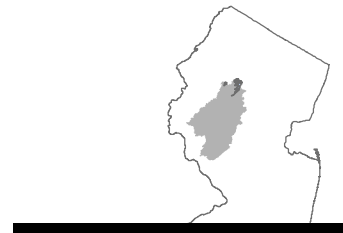


Riparian & Wetland Area Coverage



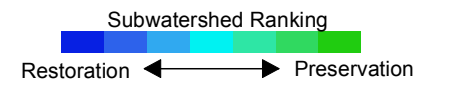
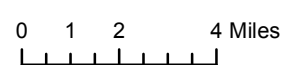
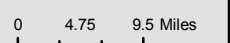
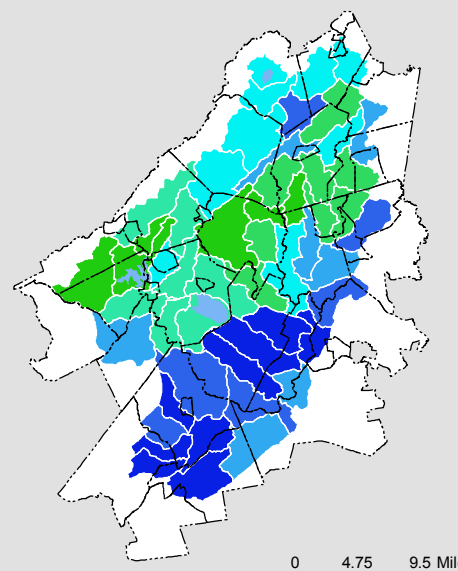
Maps of Riparian & Wetland Area Ranking and Coverage

- Municipal Boundary
- Water Body
- Subwatershed Boundary



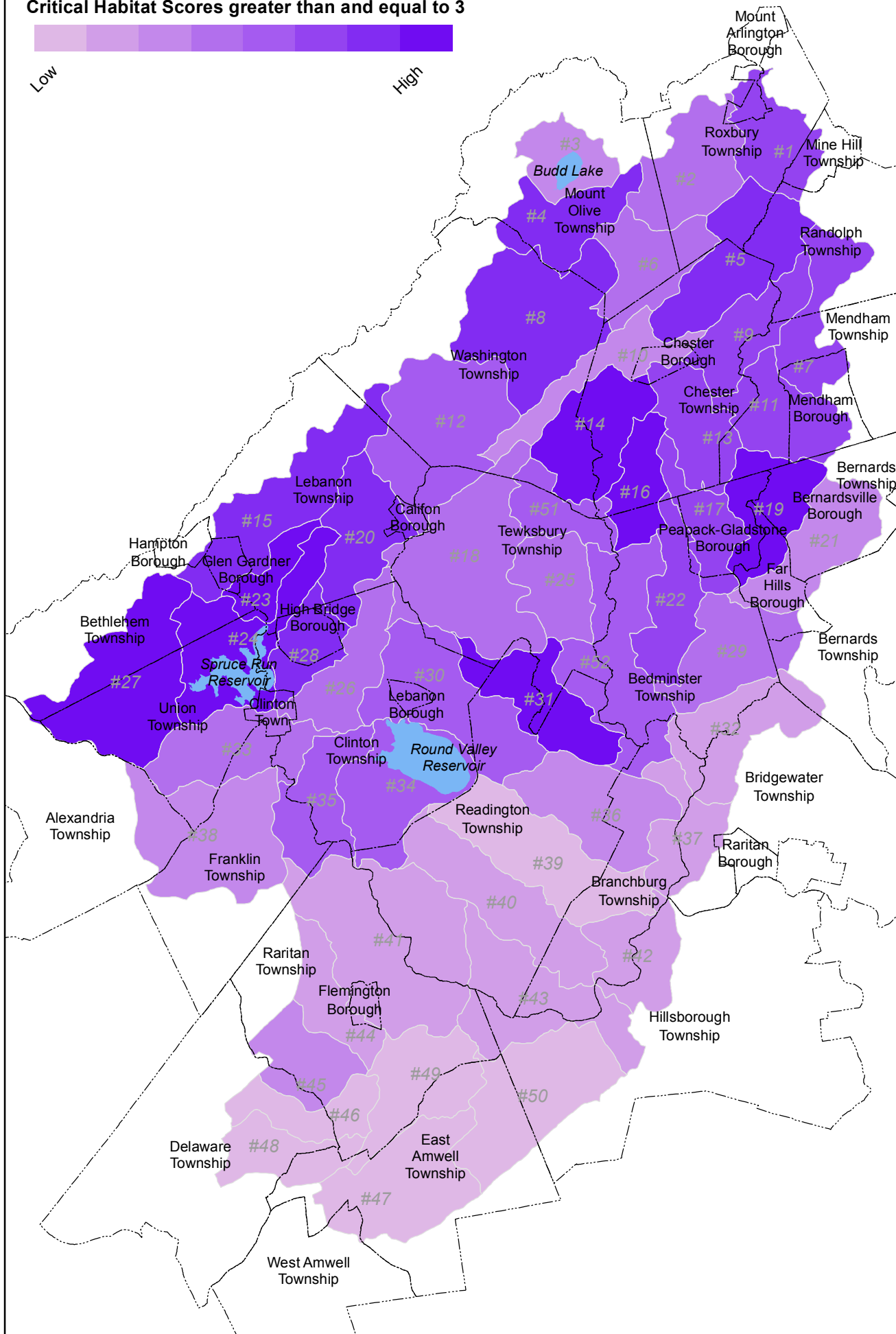
Source: Riparian Area - NJWSA (2009) | LULC (2007) urban areas were deleted from layer | 2007 Wetlands not included in Riparian Area were added to layer. Raritan Headwaters Ranking (2016)
 map created: 8/5/2016
 updated: 10/31/2016

Subwatershed Water Resource Protection Targets



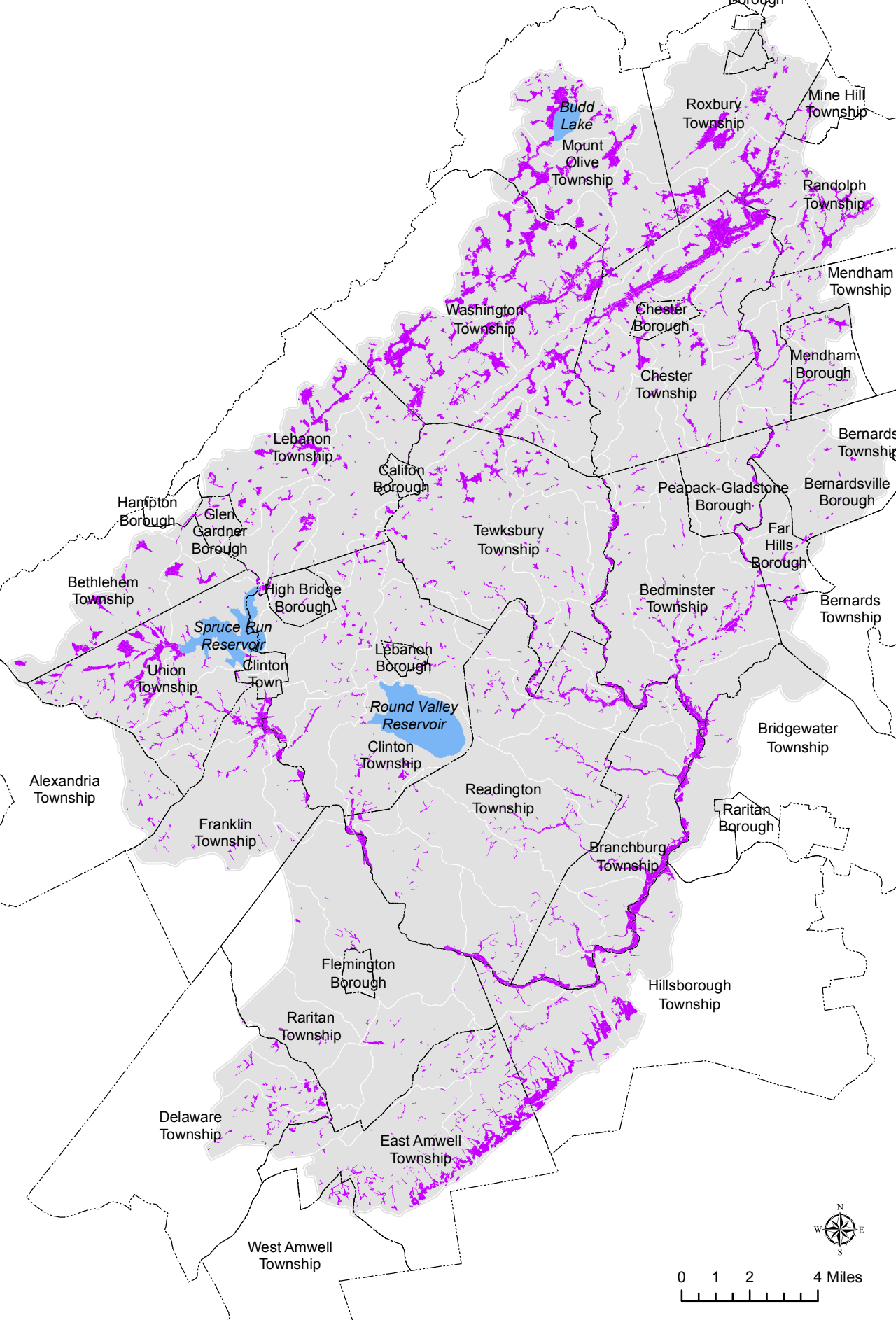
Subwatershed Rankings for Landscape Critical Habitat Areas

Critical Habitat Scores greater than and equal to 3



Landscape Coverage

Landscape Habitat Score > 3



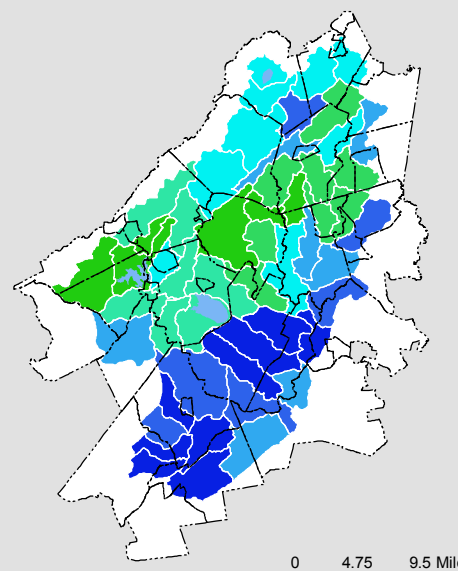
Maps of Landscape Habitat Rankings and Coverage

- Municipal Boundary
- Water Body
- Subwatershed Boundary



Source:
Landscape Critical Habitat - NJDEP (Version 3.1) | layers modified to show wetlands habitat (emergent wetlands with LNDP >=3)
Raritan Headwaters Ranking (2016)
map created: 8/5/2016

Subwatershed Water Resource Protection Targets



Subwatershed Ranking
Restoration ← → Preservation

